



Demolition Boom Attachment



An ultra high reach demolition boom is a purpose-built attachment to elevate demolition tool in tearing down multi-story buildings. The beauty of the demolition boom is in its ease of positioning and flexibility in manoeuvring of tool in carry out primary and secondary demolition jobs safely. Our attachments are engineered for performance, reliability and low total cost of ownership in mind. We fully understand the harsh working requirement, only quality steel is use in fabrication. Demolition boom for greater than 40 metric ton (88,000 lb) excavator will have a detachable and modular main boom with a quick coupling joint for efficient mounting

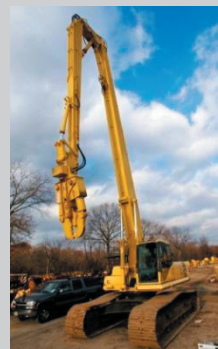
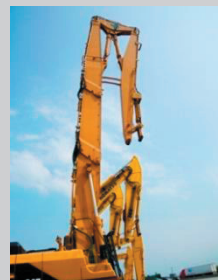
With the greater emphasis on work environment safety and stricter regulation in the industry, demolition boom is fast becoming the choice attachment for demolishing of old buildings.



and dismantling, as well as ease of ground handling and transportation.



Replacing the traditional and accident prone practice where excavators were lifted onto the building to carry out the highly risky tasks. The demolition boom has changed the entire concept in tearing down building, not only improving the overall safety standard, but has also extended the working radius and reach of the attachment where standard machine and traditional practice fall short in this respect.





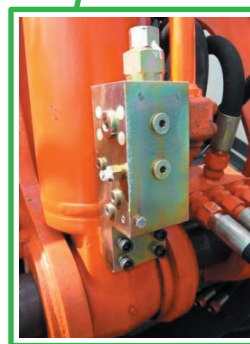
Demolition Boom Attachment

We design and customize demolition solutions for every makes and models of hydraulic excavator, starting from 10 metric ton (22,000 lb) mini excavator and upward. Depending on your excavator size, the demolition boom can easily handle work tool ranging from 0.5 ton (1,100 lb) to 4 ton (8,800 lb) of weight.

We do undertake entire turnkey solution in which we convert your existing excavator to a full fledge demolition equipment. The conversion is not restricted to the followings:

- Counterweight.
- Operator cab protection.
- Tilting or elevation of operator cab.
- Auxiliary hydraulic lines for attachment.
- Widening and lengthening of undercarriage.
- Safety check valves installation on hydraulic cylinders.
- Full commissioning of newly converted machine.

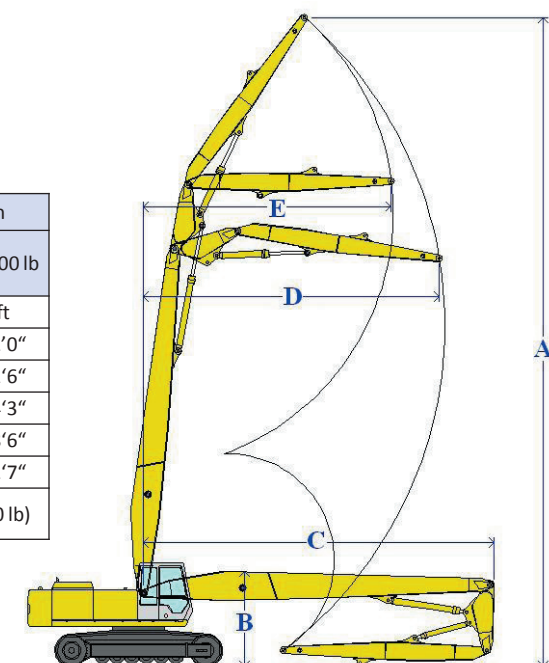
We offer our customers the option to install safety check valves for the hydraulic cylinders as an added safety feature. In situation where the hydraulic system failed, the safety valves will lock and hold the load in position. Under no circumstances safety should be a compromised when affordable, reliable and proven technology is readily available. The installation is designed not to have any effect whatsoever on the normal operating function of an excavator.



Excavator Operating Weight	25 - 28 ton		30 – 35 ton		40 – 50 ton	
	55,000 - 61,600 lb		66,000 - 77,000 lb		88,000 - 110,000 lb	
Dimensions	m	ft	m	ft	m	ft
A	17.0	55'9"	21.0	68'10"	25.0	82'0"
B	2.7	8'10"	3.0	9'10"	3.5	11'6"
C	9.8	32'1"	10.5	34'5"	13.5	44'3"
D	8.2	26'10"	8.8	28'10"	14.8	48'6"
E	6.8	22'3"	7.3	23'11"	13.0	42'7"
Maximum Tool Weight	1.5 ton (3,300 lb)		2.0 ton (4,400 lb)		2.5 ton (5,500 lb)	

* The above specifications are for reference only, actual working range may vary from machine models.

** For the benefit of continuous product improvement, specifications are subject to change without prior notice.



Sales Office:

HYDRARAM b.v.

Meander 7

NL 9231DB Surhuisterveen

THE NETHERLANDS

Contact details:

web : www.hydraram.com

Telephone : +31 512 365981

Faxcimine : +31 512 365761

E-mail : info@hydraram.com